

Liedaga iela, Tūja

Partner for Contact:

Order No.:

Company:

Customer No.:

Date: 13.07.2016

Operator: Ilona Kozare

SIA VIZULO Solutions
Ganību dambis 7a, Rīga, Latvija

Operator Ilona Kozare
Telephone + 371 28848361
Fax
e-Mail ilona.kozare@vizulo.eu

Table of contents

Liedaga iela, Tūja	
Project Cover	1
Table of contents	2
Luminaire parts list	3
VIZULO MINIMARTIN 45W MRS 045 730 L22 A024 S N M G 1	
Luminaire Data Sheet	4
Liedaga iela, 6m+1,5m	
Planning data	5
Luminaire parts list	6
Photometric Results	7
3D Rendering	8
False Colour Rendering	9
Valuation Fields	
Valuation Field Roadway 1	
Observer	
Observer 1	
Isolines (L)	10
Observer 2	
Isolines (L)	11

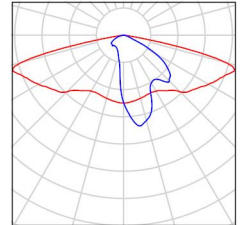
SIA VIZULO Solutions
Ganību dambis 7a, Rīga, Latvija

Operator Ilona Kozare
Telephone + 371 28848361
Fax
e-Mail ilona.kozare@vizulo.eu

Liedaga iela, Tūja / Luminaire parts list

4 Pieces VIZULO MINIMARTIN 45W MRS 045 730 L22
A024 S N M G 1
Article No.: VIZULO MINIMARTIN 45W
Luminous flux (Luminaire): 4543 lm
Luminous flux (Lamps): 4543 lm
Luminaire Wattage: 45.0 W
Luminaire classification according to CIE: 100
CIE flux code: 32 65 95 100 100
Fitting: 1 x MRS 24 LED (Correction Factor
1.000).

See our luminaire
catalog for an image of
the luminaire.



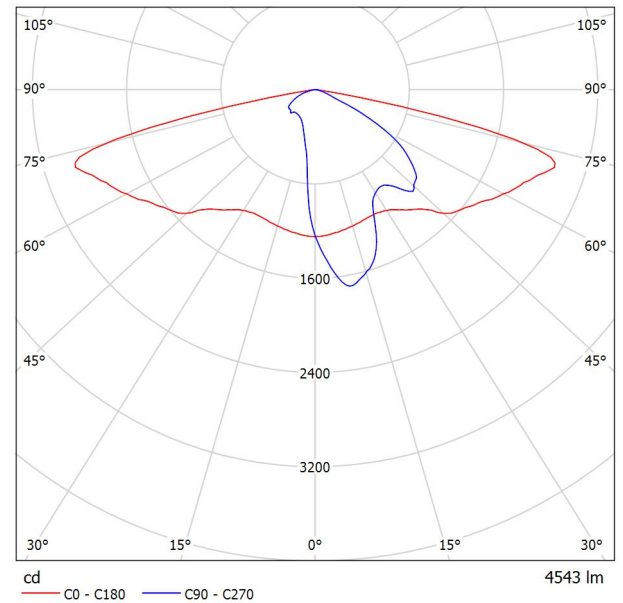
SIA VIZULO Solutions
Ganību dambis 7a, Rīga, Latvija

Operator Ilona Kozare
Telephone + 371 28848361
Fax
e-Mail ilona.kozare@vizulo.eu

VIZULO MINIMARTIN 45W MRS 045 730 L22 A024 S N M G 1 / Luminaire Data Sheet

See our luminaire catalog for an image of the luminaire.

Luminous emittance 1:



Luminaire classification according to CIE: 100
CIE flux code: 32 65 95 100 100

Due to missing symmetry properties, no UGR table can be displayed for this luminaire.

SIA VIZULO Solutions
Ganību dambis 7a, Rīga, Latvija

Operator Ilona Kozare
Telephone + 371 28848361
Fax
e-Mail ilona.kozare@vizulo.eu

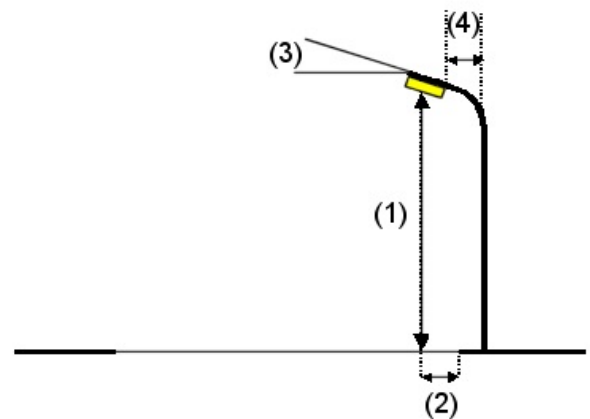
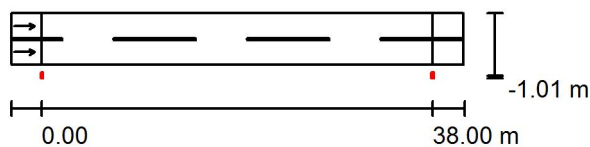
Liedaga iela, 6m+1,5m / Planning data

Street Profile

Roadway 1 (Width: 5.000 m, Number of lanes: 2, tarmac: R3, q0: 0.070)

Maintenance factor: 0.80

Luminaire Arrangements



Luminaire:	VIZULO MINIMARTIN 45W MRS 045 730 L22 A024 S N M G 1	
Luminous flux (Luminaire):	4543 lm	Maximum luminous intensities
Luminous flux (Lamps):	4543 lm	at 70°: 704 cd/klm
Luminaire Wattage:	45.0 W	at 80°: 306 cd/klm
Arrangement:	Single row, bottom	at 90°: 3.15 cd/klm
Pole Distance:	38.000 m	Any direction forming the specified angle from the downward vertical, with the luminaire installed for use.
Mounting Height (1):	7.500 m	No luminous intensities above 95°.
Height:	7.410 m	Arrangement complies with glare index class D.5.
Overhang (2):	-1.000 m	
Boom Angle (3):	5.0°	
Boom Length (4):	0.000 m	

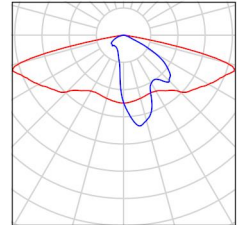
SIA VIZULO Solutions
Ganību dambis 7a, Rīga, Latvija

Operator Ilona Kozare
Telephone + 371 28848361
Fax
e-Mail ilona.kozare@vizulo.eu

Liedaga iela, 6m+1,5m / Luminaire parts list

VIZULO MINIMARTIN 45W MRS 045 730 L22
A024 S N M G 1
Article No.: VIZULO MINIMARTIN 45W
Luminous flux (Luminaire): 4543 lm
Luminous flux (Lamps): 4543 lm
Luminaire Wattage: 45.0 W
Luminaire classification according to CIE: 100
CIE flux code: 32 65 95 100 100
Fitting: 1 x MRS 24 LED (Correction Factor
1.000).

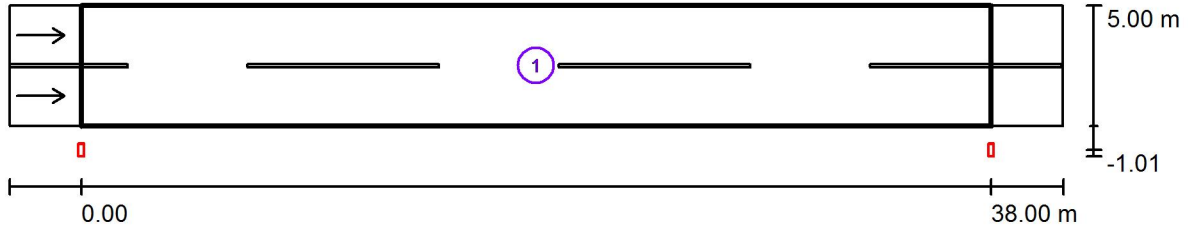
See our luminaire
catalog for an image of
the luminaire.



SIA VIZULO Solutions
 Ganību dambis 7a, Rīga, Latvija

Operator Ilona Kozare
 Telephone + 371 28848361
 Fax
 e-Mail ilona.kozare@vizulo.eu

Liedaga iela, 6m+1,5m / Photometric Results



Maintenance factor: 0.80

Scale 1:315

Calculation Field List

- 1 Valuation Field Roadway 1
 Length: 38.000 m, Width: 5.000 m
 Grid: 13 x 6 Points
 Accompanying Street Elements: Roadway 1.
 tarmac: R3, q0: 0.070
 Selected Lighting Class: ME5

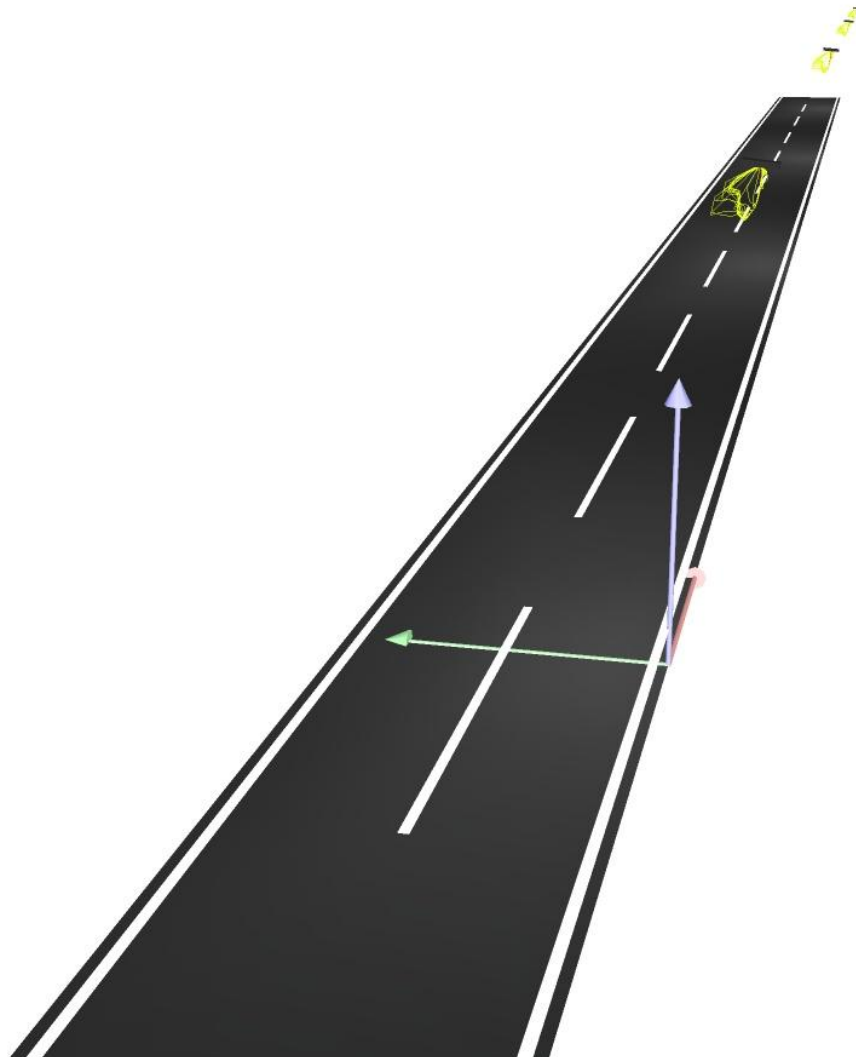
(All lighting performance requirements are met.)

	L_{av} [cd/m ²]	U0	UI	TI [%]	SR
Calculated values:	0.52	0.44	0.60	15	0.66
Required values according to class:	≥ 0.50	≥ 0.35	≥ 0.40	≤ 15	≥ 0.50
Fulfilled/Not fulfilled:	✓	✓	✓	✓	✓

SIA VIZULO Solutions
Ganību dambis 7a, Rīga, Latvija

Operator Ilona Kozare
Telephone + 371 28848361
Fax
e-Mail ilona.kozare@vizulo.eu

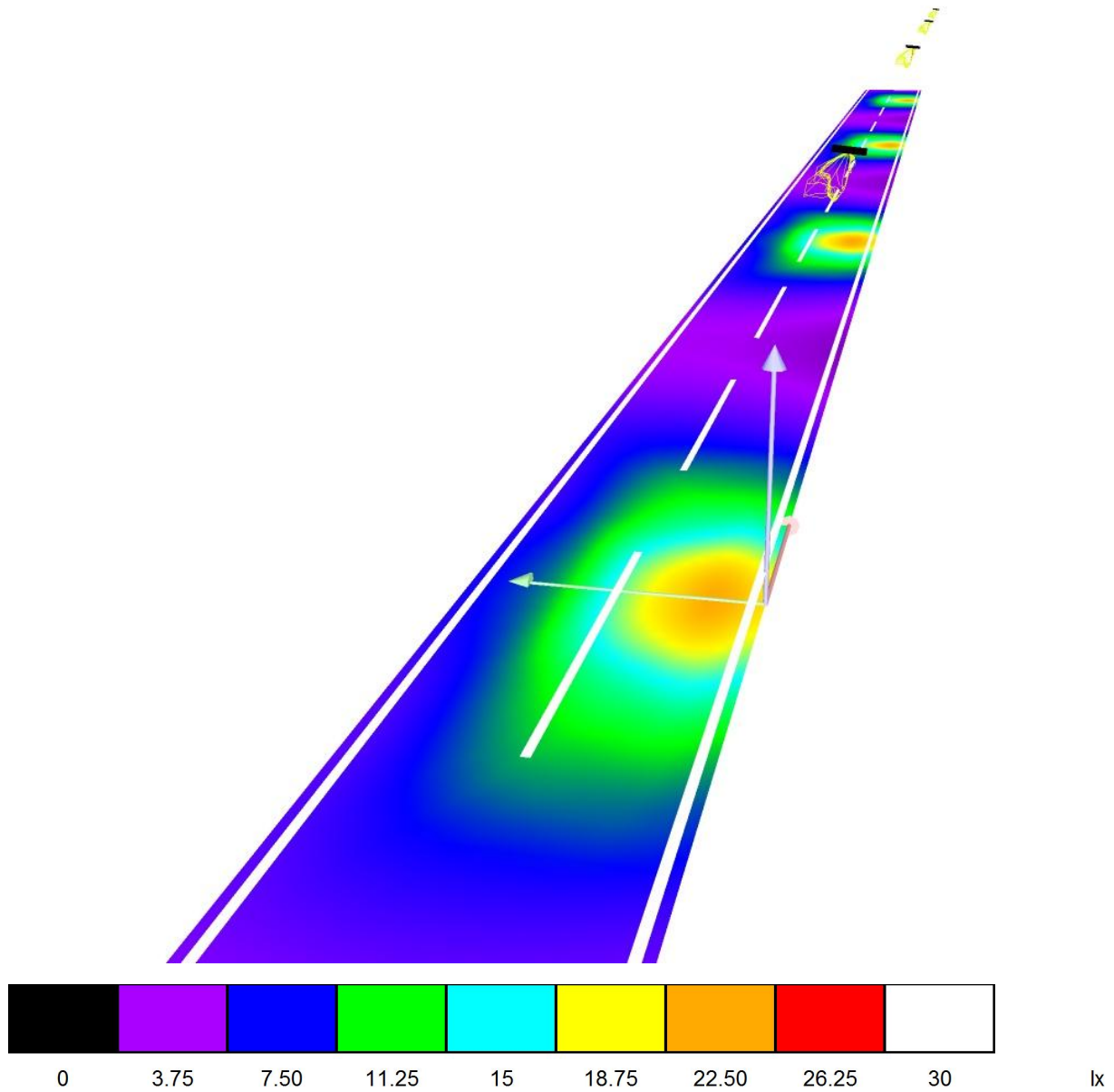
Liedaga iela, 6m+1,5m / 3D Rendering



SIA VIZULO Solutions
Ganību dambis 7a, Rīga, Latvija

Operator Ilona Kozare
Telephone + 371 28848361
Fax
e-Mail ilona.kozare@vizulo.eu

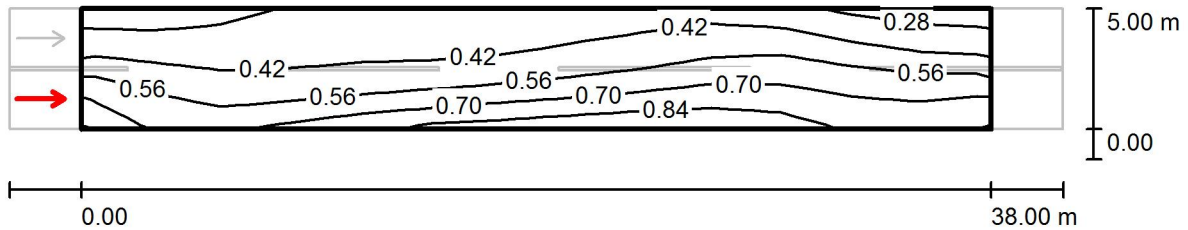
Liedaga iela, 6m+1,5m / False Colour Rendering



SIA VIZULO Solutions
 Ganību dambis 7a, Rīga, Latvija

Operator Ilona Kozare
 Telephone + 371 28848361
 Fax
 e-Mail ilona.kozare@vizulo.eu

Liedaga iela, 6m+1,5m / Valuation Field Roadway 1 / Observer 1 / Isolines (L)



Values in Candela/m², Scale 1 : 315

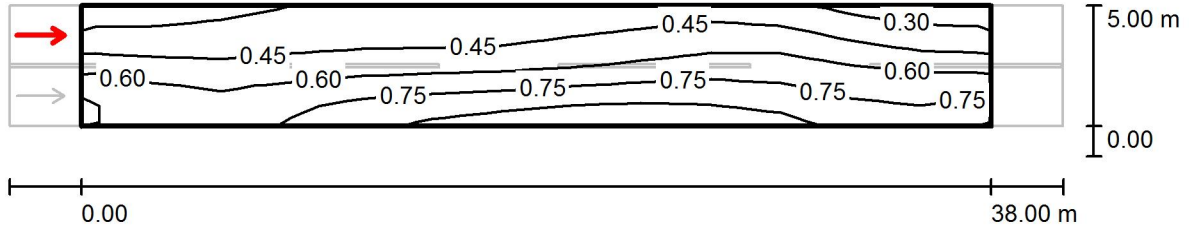
Grid: 13 x 6 Points
 Observer Position: (-60.000 m, 1.250 m, 1.500 m)
 tarmac: R3, q0: 0.070

	L_{av} [cd/m ²]	U0	UI	TI [%]
Calculated values:	0.52	0.44	0.65	15
Required values according to class ME5:	≥ 0.50	≥ 0.35	≥ 0.40	≤ 15
Fulfilled/Not fulfilled:	✓	✓	✓	✓

SIA VIZULO Solutions
 Ganību dambis 7a, Rīga, Latvija

Operator Ilona Kozare
 Telephone + 371 28848361
 Fax
 e-Mail ilona.kozare@vizulo.eu

Liedaga iela, 6m+1,5m / Valuation Field Roadway 1 / Observer 2 / Isolines (L)



Values in Candela/m², Scale 1 : 315

Grid: 13 x 6 Points
 Observer Position: (-60.000 m, 3.750 m, 1.500 m)
 tarmac: R3, q0: 0.070

	L_{av} [cd/m ²]	U0	UI	TI [%]
Calculated values:	0.58	0.44	0.60	11
Required values according to class ME5:	≥ 0.50	≥ 0.35	≥ 0.40	≤ 15
Fulfilled/Not fulfilled:	✓	✓	✓	✓